



# LED DISPLAY SCREEN

## INDOOR FULL COLOR SMD 3 IN 1



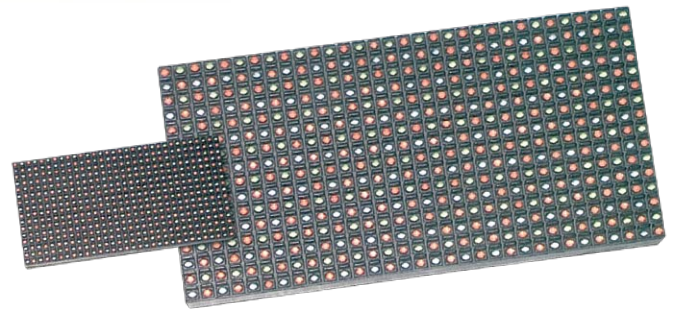
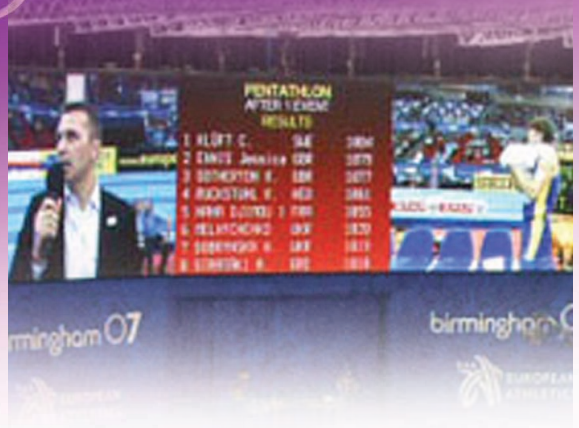
Indoor full color SMD 3 in 1 combines RGB leds as a round/square pixel uniforming in panels.

Widely used in hotel, school, office, halls, retail outlet, restaurant & etc.

### Features:-

- good lightening accordance & no mosaic
- clear text, vivid graphic & video effect
- large view angle of 120° horizontal & vertical angle
- vivid effect within any view angle position
- any led in each panel can easily repaired

## OUTDOOR FULL COLOR DISPLAY



Outdoor full color display is combined by well-knit RGB leds uniforming in panels.

Widely used in stadium, building, highway, advertising board, etc

### Features:-

- good lightening accordance & no mosaic
- clear text, vivid graphic & video effect
- large view angle of >120° horizontal & >60° vertical angle
- vivid effect within any view angle position
- any led in each panel can easily repaired



## INDOOR FULL COLOR SMD 3 IN 1 DISPLAY

### Technical Parameter

Item	P6	P7.62	P8	P10	P12
Pixel pitch (mm)	6	7.62	8	10	12
LED type	3528				
Unit panel (mm)	192*96	244*122	256*128	320*160	192*192
Unit panel resolution (W*H)	32*16	32*16	32*16	32*16	16*16
Density (pixel/m <sup>2</sup> )	27777	17222	15625	10000	6944
Brightness (cd/m <sup>2</sup> )	1500	1500	1250	1100	1000
Best viewing distance	≥6m	≥6m	≥8m	≥10m	≥12m
Scan mode	1/8	1/4	1/4	1/4	1/4
Max.power consumption (≤w/m <sup>2</sup> )	600	800	600	500	500
Average.power consumption (≤w/m <sup>2</sup> )	300	400	300	280	250
Viewing angle	Horizontal : 120° , vertical : 120°				
Drive mode	5-5-5				
Gray scale	1024 gray scale in each Red, Green, Blue color				
Display color	16777216 kinds				
Frame velocity	≥60 (frame/second)				
Control mode	Synchronize with the computer				
Display mode	1024*768 or 800*600				
Display lifespan	>100,000 hrs				
Blind pixels rate	≤0.0002				
Working voltage	AC220V ± 15% 47-64HZ				
Control distance	<120m (kind 5 cable), 1000m or more (optical fiber)				
Working temperature	-10°C ~ 50°C				
Working humidity	10%-90%RH				



## INDOOR SINGLE/BI-COLOR LED DISPLAY

### Technical Parameter

Item	PH4	PH4.75	PH7.62
Pixel Pitch (mm)	4	4.75	7.62
Configuration	1R		
Density (pixel/m <sup>2</sup> )	62500	44320	17222
Module Size (mm)	32*32	38*38	61*61
Unit Board Size (mm)	256*128	304*152	488*244
Unit Board Resolution (W*H)	64*32		
Best Viewing Distance	≥4m	≥5m	≥6m
Best Viewing Angle	120°		
Max.Power Consumption (W/m <sup>2</sup> )	600	400	150
Control Mode	Synchronism/asynchronism		
Drive Mode	1/16 Scan		
Frame Rate	≥60Hz		
Refresh Rate	≥180Hz		
White Balance Brightness	≥200		
Ambient Temperature	0°C ~ 50°C		
Working Voltage (AC)	220 ± 10%		
Brightness Adjustment	Software 0-100 grade adjustment		
PC Operating System	WIN98, WINXP, WIN2000, etc		
Input Signals	Therefore, S-Video, RGB, RGBHV, YUV, YC, COMPOSITION		
Control System	Control Card (sending & receiving card)		
MTBF	≥1000 hours		
Display Lifespan	≥100,000 hours		
PC Display Mode	1024*768		
Software	LED (MDK) LED studio (MDK)		

## OUTDOOR FULL COLOR LED DISPLAY

### Technical Parameter

Item	P10 Full color	P12 Full color	P16 Full color	P20 Full color
Pixel pitch (mm)	10	12	16	20
Modules size (mm)	160*160	192*96	256*128	320*160
Cabinet size (mm)	960*800	768*768	1024*768	1280*960
Physical pixel density (dots/m <sup>2</sup> )	10000	6944	3906	2500
LED composin/size	3mm Oval 1R1G1B	3mm Oval 1R1G1B	5mm Oval 2R1G1G	5mm Oval 2R1G1B
Module resolution (dots)	16*16	16*8	16*8	16*8
Cabinet resolution (dots)	96*80	64*48	64*48	64*48
Best viewing distance (m)	10-70	10-70	15-110	15-140
Viewing angle	Horizontal 100° ~ 110° Vertical 30° ~ 50°			
Environmental temperature	Storage -40°C ~ +85°C, Working -20°C ~ +60°C			
Ave.power consumption (W/m <sup>2</sup> )	375	600	600	400
Max.power consumption (≤W/m <sup>2</sup> )	750	1200	1200	800
Control mode	Synchronism			
Graphic card	DVI Video Card			
Drive mode	1/4 scan	1/4 scan	Static	Static
Frame rate	≥60HZ			
Refresh rate	≥180HZ			
Gray scale	Display 4096 color	Display 8192 color	Display 16384 color	Display 16384 color
White balance brightness (≥cd/m <sup>2</sup> )	6500	5500	8500	6500
Working voltage (AC)	110-230V			
Brightness adjustment mode	16 level adjustable for Brightness Sensor Automation Adjustment 256 level adjustable manually via software			
Computer system	Win98, WinXP, Win2000			
Control operating system	Control Card (sending card + receiving card)			
MTBF	≥5000 hours			
Lifespan	50000 ~ 100000			
Malfunction rate of pixel	<0.0002			
Software	LED Studio			

## OUTDOOR SINGLE/BI-COLOR LED DISPLAY

### Technical Parameter

Item	PH10 (single color)	PH10 (dual color)	PH12 (dual color)	PH16 (dual color)	PH20 (dual color)
Pixel pitch (mm)	10	10	12	16	20
Configuration	1R	1R 1PG	2R 1PG	2R 1PG	2R 1PG
Density (pixel/m <sup>2</sup> )	10000	10000	6944	3906	2500
Cabinet size (mm)	640*640	640*640	768*576	1024*768	1280*960
Cabinet resolution (W*H)	64*64	64*64	64*48	64*48	64*48
Cabinet pixel (pixel/panel)	4096	4096	3072	3072	3072
Best viewing distance (m)	10-120	10-120	12-120	16-150	20-150m
Best viewing angle	Horizontal : 90-120 degree, Vertical : 30-60 degree (available)				
Average power consumption (W/m <sup>2</sup> )	100-250	200-250	450-6050	200-340	200-300
Max power consumption (≤W/m <sup>2</sup> )	400	600	1400	700	600
Control mode	Synchronism or Asynchronism				
Video mode	DVI video card				
Drive mode	1/4 scan constant drive	1/4 scan constant drive	1/4 scan constant drive	1/4 scan constant drive	1/4 scan constant static
Frame rate	≥60Hz				
Refresh rate	≥180Hz				
White balance brightness (≥cd/m <sup>2</sup> )	3500	5000	7000	4500	4500
Ambient temperature	Storage : -40°C ~ +85°C ; Working : 20°C ~ 50°C				
Working voltage (AC)	220 ± 5%				
Brightness adjustment	Software 0-100 grade adjustment				
PC operating system	WIN98, WINXP, WIN2000, etc				
Input signals	RF, S-VIDEO, RGB, RGBHV, YUV, YC, COMPOSITION				
Control system	Control card (sending & receiving card)				
MTBF	≥5000hours				
Display lifespan	≥100,000 hours				
PC display mode	1024 x 768				
Software	LED studio (MDK)				

# SYSTEM DIAGRAM OF LED DISPLAY



Digital Video Camera

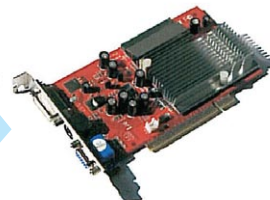
CCTV

TV Program

DVD / Blu-ray Player



LED Display Control System



Sending Card  
(installed inside the host computer)

Connected using Cat 5 /  
Fiber Optic cable



Receiving Card  
(installed in the cabinet of LED)



Receiving Card  
(installed in the cabinet of LED)



LED Display Screen 1



LED Display Screen 2

